



Toward 2034



- 1934.05** Established Chosun Wireless Institute
- 1964.10** Renamed to Kwangwoon College of Electrical and Electronic Engineering
- 1979.12** Established the Graduate School of Kwangwoon College of Engineering
- 1988.03** Launched Kwangwoon University
- 1998.06** Opened Ice Rink at Munhwa - Building
- 2016.09** Completed Kwangwoon Square and the 80th Anniversary Memorial Hall
- 2017.09** Opened Kwangwoon University Dormitory (Bitsoljae)
- 2022.07** Selected for the University ICT Research Center Development Support Program
- 2022.08** Selected consecutively for the Phase 2 Comprehensive Track of Seoul's Campus Town Project
- 2023.06** Selected for Lifelong Education System Support Project (LiFE 2.0)
- 2024.03** Held the 90th Anniversary Ceremony
- 2025.06** Selected for the 2025 Semiconductor-Specialized University Support Program
- 2025.08** Achieved the highest rating 'S' for two consecutive years in the University Innovation Support Program Performance Evaluation
- 2025.10** Produced 18 scientists ranked in the World's Top 2%



AX IMPACT SQUARE KWANGWOON UNIVERSITY

Kwangwoon University is the true powerhouse of Korea's AX innovation, changing education with AI, shaping the future through research, innovating industries through entrepreneurship, and growing together with the community.



-  Website <http://www.kw.ac.kr>
-  Instagram @Kwangwoon_univ_official
-  Broadcasting Center @KWBConair

20 Gwangun-ro (Wolgye-dong), Nowon-gu, Seoul 01897
International Exchange Team +82-2-940-5014~5 oia.kw.ac.kr

The Research-centered University Leading Korea's AX Innovation



IMPACT SQUARE KWANGWOON UNIVERSITY



From the first college of electrical engineering to the leading university at the center of AX innovation, we look forward to celebrating Kwangwoon University's 100 years of shaping the future.

Since 1934

Educational Philosophy

- Truth [Veritas]**
- A person who is intellectually advanced and ethically grounded
 - A person with profound expertise in their field
 - A person with global competency
- Light [Lux]**
- A person who communicates in an integrative way
 - A person who embodies innovative spirit and creativity
 - A person who contributes to a sustainable future

Ideal Talent

"A True Bright Talent Leading the Future"

A talent who cultivates interdisciplinary knowledge, upholds moral principles, deeply explores their field of expertise, and nurtures global competence. Through integrative communication across technology, society, and people, they exhibit innovative thinking, becoming a practical talent dedicated to creating a sustainable future society.



Kwangwoon University, the National Hub for fostering AI Talent

The talents nurtured by Kwangwoon University are shaping the "Innovative Future of AI" in Korea

The Kwangwoon-style Growth Ladder Model,
Connecting Education-Research- Industry-Policy Leadership

Kyunghoon Bae, Deputy Prime Minister and Minister of Science and ICT, overseeing national AI policies

- Kwangwoon Alumnus, Bachelor's in Electronic Physics ('96), Master's and Ph.D. in Electronic Engineering

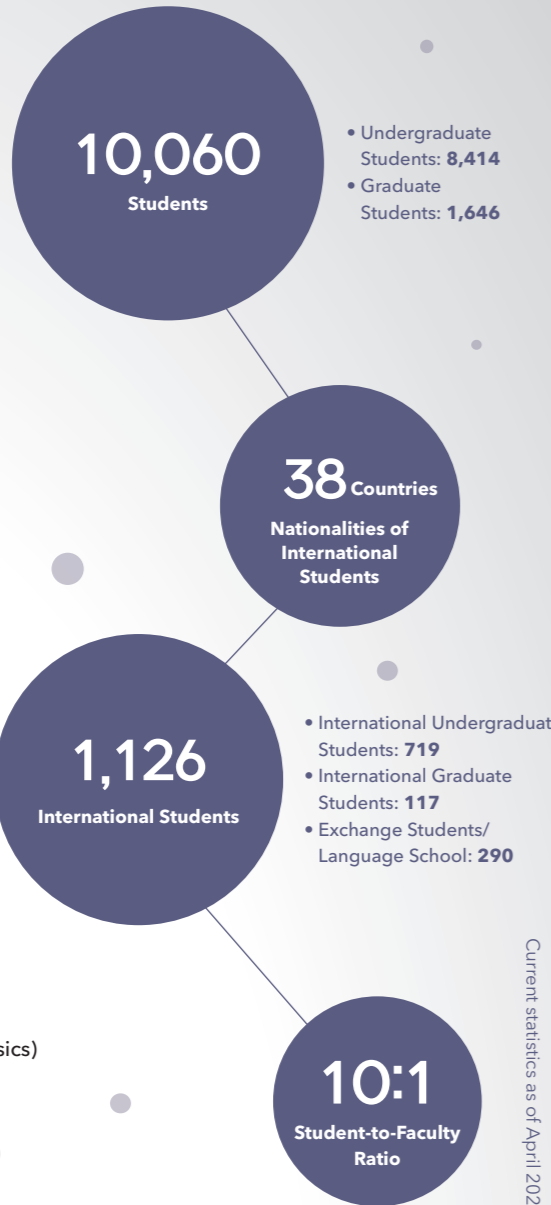
Young Lee, Former Minister of SMEs and Startups

- Kwangwoon Alumna, Bachelor's in Mathematics ('86), who rose from Women Entrepreneur to Minister of SMEs and Startups

18 Professors of Kwangwoon Listed among the World's Top 2% Scientists

- Selected jointly by Stanford University (USA) and Elsevier among the most influential researchers worldwide

- Taekyun Kim** (Dept. of Mathematics)
- Younghun Kim** (Dept. of Chemical Engineering)
- Nam Young Kim** (Dept. of Electronic Engineering)
- Myeon-ju Park** (Dept. of Electronic Convergence Engineering)
- Jae Yeong Park** (Dept. of Electronic Engineering)
- Chulwan Park** (Dept. of Chemical Engineering)
- Sang-Shin Lee** (Dept. of Electronic Engineering)
- Taek Lee** (Dept. of Chemical Engineering)
- Min Jang** (Dept. of Environmental Engineering)
- Eunseong Cho** (Division of Business Administration)
- Eun Ha Choi** (Dept. of Electrical and Biological Physics)
- Tae-Jun Ha** (Dept. of Electronic Materials Engineering)
- Hwan-Seop Eom** (PBRC Visiting Professor)
- Shabi Abbas Zaidi** (Dept. of Chemistry)
- Nagendra Kumar Kaushik** (Dept. of Electrical and Biological Physics)
- Janardhan Reddy Koduru** (Dept. of Environmental Engineering)
- Yong Cheol Kang** (Research Professor)
- Ringgamdinne** (Researcher, Dept. of Environmental Engineering)



Current statistics as of April 2025

Globally recognized for research competitiveness, building the foundation for future AX

Growing into a new "Innovative Research University"
with global research competitiveness in the AX era



Achieved the highest rating 'S' for two consecutive years in performance evaluation for university innovation support projects
(Ministry of Education, National Research Foundation of Korea)

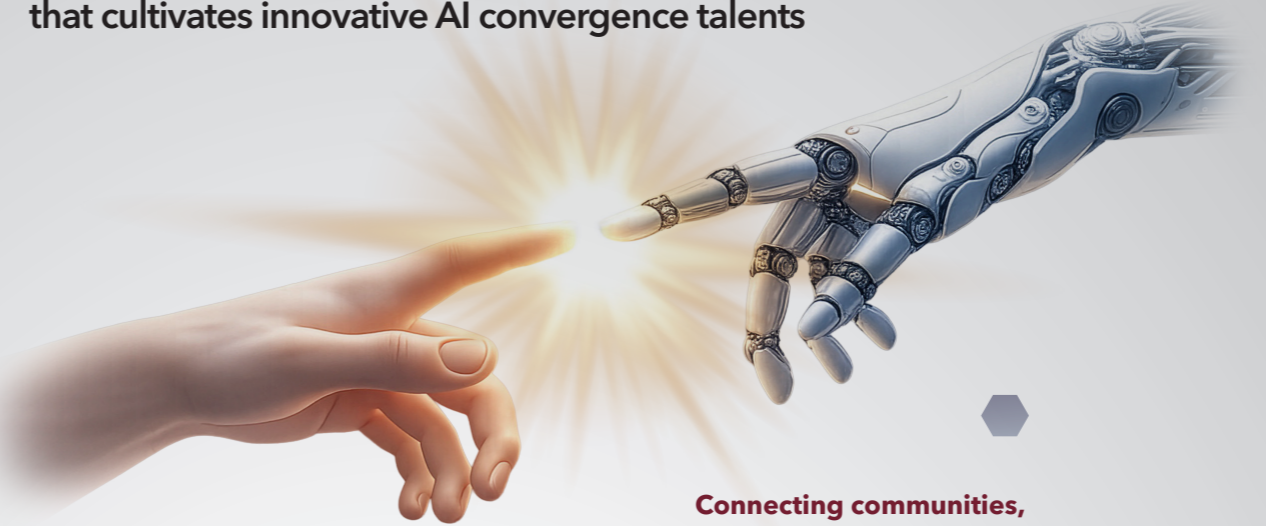
Recognized as top university (S Grade) in the 2024 IPP Work-Learning Dual System Performance Assessment
(Ministry of Employment and Labor, Human Resources Development Service of Korea)

Selected for the Ministry of Education's High School Education Support Project for 13 consecutive years
(Ministry of Education)

Selected as an excellent university in educational competency by the 2025 University News Network Awards
(University News Network)

National Hub for Incubating AX Talent and Innovative Entrepreneurship

We build a national stronghold, driving a "Glocal Platform"
that cultivates innovative AI convergence talents



Humanities Utmost Sharing System (HUSS)

- Won 9 billion KRW in government funding (Ministry of Education) through the "Global Symbiosis Consortium (2024)"
- Won 8.5 billion KRW in government funding (Ministry of Education) through the "Digital Economy Consortium (2025)"

Regional Innovation System & Education (RISE)

- Establishing a Seoul-style ecosystem for lifelong education
- Expanding models for AI-based counseling, psychology, and caregiving

University Specialized in Semiconductor Education for Growing Industry-Ready Semiconductor Systems Experts

- Specialized curriculums focused on semiconductor systems designing and engineering
- Collaborating with 35 companies in the field

Connecting communities, industries and people to create an "Innovative Startup University"

- Selected as the Leading University for the 2026 Seoul Campus Town Project**
A strategic hub for youth entrepreneurship in northeast of Seoul, with 4 years of support totaling 4.8 billion KRW.
- Fostering 250+ AI & Deep Tech startups**
-Aiming to produce 1,000+ AI experts
-Building the AX ecosystem in collaboration with Kakao, KT, Cisco, and five neighboring districts of Seoul
-Fostering "Baby Unicorns" through full-lifecycle (Seed-Speed-Lead) support
- Introducing a Clinic-like Space for Startup Support at Kwangwoon University**
-Provides experience-based support to proactively address potential challenges at each phase of startup growth
-Oversees Clinic Center 1 (Yeonchonjae), 2 (Startup Cafe), Vitamin Center, Startup Station, and more

Unrivaled depth and competitiveness in scholarship offered by Kwangwoon University's College and Graduate School

- College of Electronics & Information Engineering**
Dept. of Electronic Engineering, Dept. of Electronics & Communications Engineering, Dept. of Electronic Convergence Engineering, Dept. of Electrical Engineering, Dept. of Electronic Materials Engineering, School of Semiconductor System Engineering Major of Semiconductor System Engineering
- College of Law and Public Policy**
Dept. of Public Administration, Division of Law (General Law, Corporate Law, Science and Technology Law), Dept. of International Studies (International Area Studies)
- College of Business**
Division of Business Administration (Business, Big Data Management), Division of International Trade (Global Business, International Finance)
- College of AI Convergence**
School of Computer and Information Engineering, School of Software, School of Information Convergence, Division of Robotics Major of AI Robot
- College of Engineering**
Dept. of Architecture (5 years course), Dept. of Architectural Engineering, Dept. of Chemical Engineering, Dept. of Environmental Engineering
- College of Natural Sciences**
Dept. of Mathematics, Dept. of Electrical and Biological Physics, Dept. of Chemistry, Dept. of Convergence Sports Science
- College of Humanities and Social Sciences**
Dept. of Korean Language and Literature, Dept. of English Language and Industry, School of Media and Communication (Media and Entertainment, Interactive Media Communication and Strategic Communication), Dept. of Industrial Psychology, Division of Northeast Asia Cultural Industries (Cultural Exchange, Cultural Content Development)
- Graduate Schools**
Graduate Schools / Graduate School of Environmental Studies / Graduate School of Business Administration / Graduate School of Smart Convergence / Graduate School of Education / Graduate School of Counseling, Welfare and Policy / Graduate School of Legal Affairs in Construction
※ Graduate Programs supported by KOSME
Dept. of Defense AI Robot Convergence, Dept. of Defense Industry AI Defense Robot Convergence, Dept. of AI Media Solution

